

PROPOSED ELEVATIONS | 1:100

PLAN KEY table listing materials like concrete foundations, load-bearing walls, and brickwork.

Structural details to be in accordance with / subject to Structural Engineers & Manufacturers information table.

FD 30 Denotes 30 minute fire door table with fire alarm system details.

FOUL WATER DRAINAGE KEY table detailing drainage components like inspection chambers and traps.

ACCESSIBILITY NOTES table regarding entrance doors and ramps.

COMMISSIONING table detailing building services and ventilation requirements.

BACKGROUND VENTILATION table explaining ventilation requirements for bedrooms and bathrooms.

EMERGENCY ESCAPE WINDOWS table detailing escape window specifications.

APPROVED DOCUMENT Q table regarding window and door certification.

FINAL FLOOR JOISTS: Final details of the first floor joists shall be confirmed within the Manufacturers design and calculations.

CRITICAL GLAZING: Windows / Doors / Glazing are to be in accordance with the contractor / manufacturers details and final design.

WATER USAGE: Water use of the dwelling should be less than 125 litres/person/day in accordance with Approved Document G.

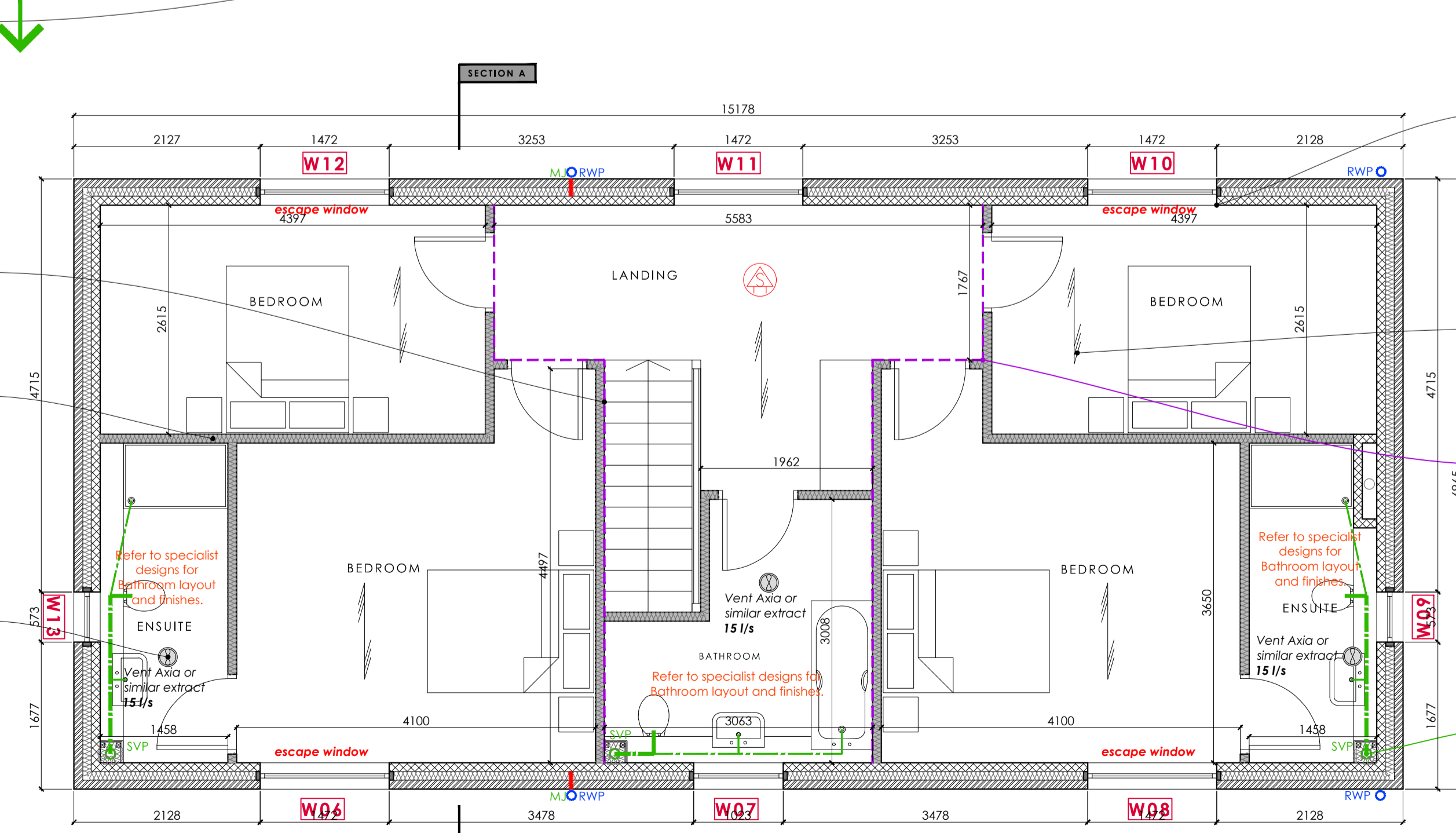
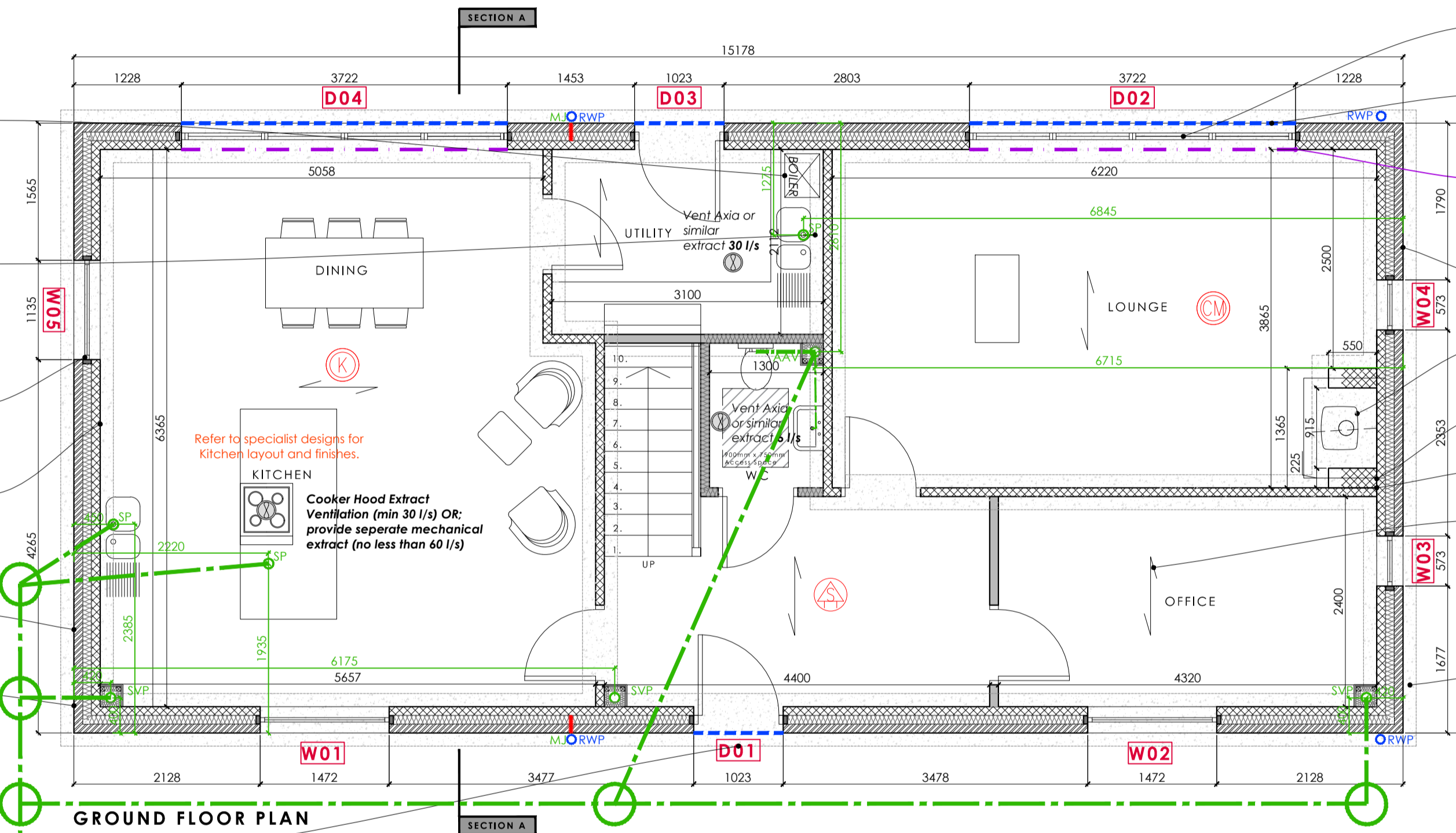
ACCESSIBILITY NOTES: Entrance doors are to provide a minimum clear width of 800mm.

COMMISSIONING: The building services (including intermittent extract ventilation) systems should be commissioned so that at completion the system and its controls are left in working order.

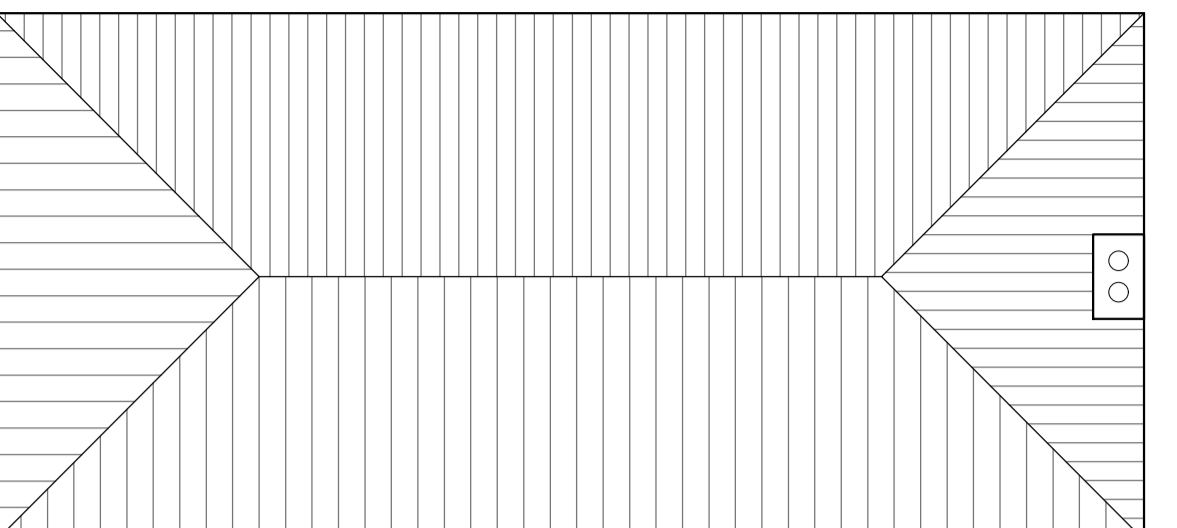
BACKGROUND VENTILATION: It is important to ensure background ventilation is calculated prior to the manufacture of windows and doors.

EMERGENCY ESCAPE WINDOWS: Bedroom windows are to be escape windows (as and where shown on plans).

APPROVED DOCUMENT Q: Windows & Doors to be certified to PAS24 in accordance with Approved Document Q.



PROPOSED PLANS | 1:50



ROOF PLAN | 1:100

CHIMNEY NOTES & INFORMATION: Fireplace & Hearth - A constructional hearth should be provided of solid, non-combustible material at least 125mm thick.

IMPORTANT SAFETY INFORMATION table regarding fire safety and carbon monoxide detection.

WINDOW SCHEDULE table listing window sizes and heights.

DOOR SCHEDULE table listing door sizes and heights.

See notes on Critical Glazing for low level screens / windows.

If rear doors are to have a level terrace externally it will be necessary to provide level threshold drainage channels.

Calculations to be provided for all structural support beams / lintels to openings greater than 3m.

Internal load bearing walls to be constructed from suitable foundations. Walls to be concrete blockwork.

Trench fill foundations may be utilised subject to ensuring suitable depth for the floor building up and prevent cold bridging.

Emergency Egress windows and doors - window should have an un-obstructed openable area that is at least 0.33m².

Buttressing stud wall to be installed to provide further support to long length of masonry.

- Rev G | General Internal Amends | 09.08.2022
Rev F | Amends to Window openings | 15.06.2022
Rev E | Drainage Dims Added | 22.03.2022

DRAWING ISSUES AND REVISIONS table with columns for issue number and description.

ldc logo and contact information for LDC Design Consultancy.

PROJECT: Residential Development Willingham Road Market Rasen
DATE: Feb 2021
TITLE: House Type 9 (Handed) Plans & Elevations

Subject to Structural Engineers Details

Subject to Building Control Approval

Subject to Manufacturers Details

This drawing is the copyright of LDC Design Consultancy and may not be reproduced without the written consent of the contractor.