










THE FIELDFARE

Features :

-  4 Bedrooms
-  Living Room
-  Turfed Garden
-  1 Bathroom
-  Kitchen Diner
-  Single Garage
-  2 Ensuites



Welcome to Plot 20

- House Type** Detached
- Property Type** Freehold
- Gross internal area** 157m2 approx.
- Build Materials** Brick & Block
Natural Clay Roof
Athena Blend Red Brick
Black Windows & Doors
- Service Charge** £376.03 per annum*
*subject to final budget- enquire within

-  EV Charge Point
-  Solar Panels
-  Quartz Worktops
-  Integrated Appliances
-  Underfloor Heating
-  Block Paved Driveway

AND MUCH MORE...

Please see full specification sheet for what is included within the sale price.

Sale Price
from

£450,000

subject to buyer choices



LAST FEW PLOTS REMAIN!

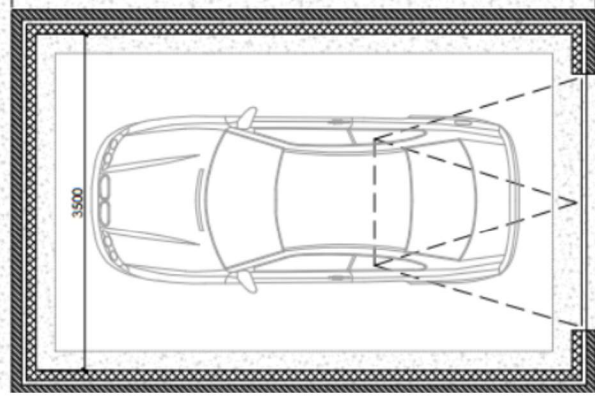
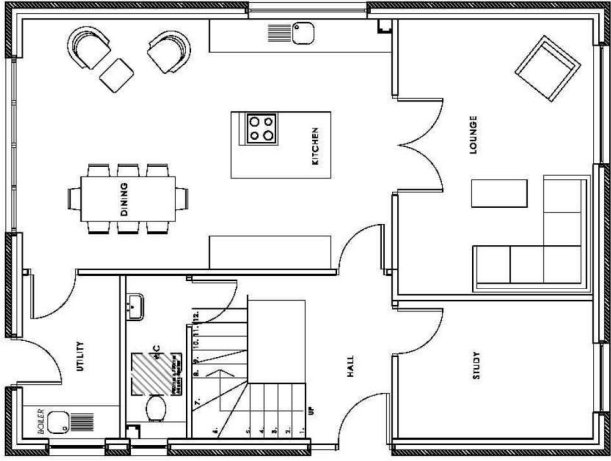
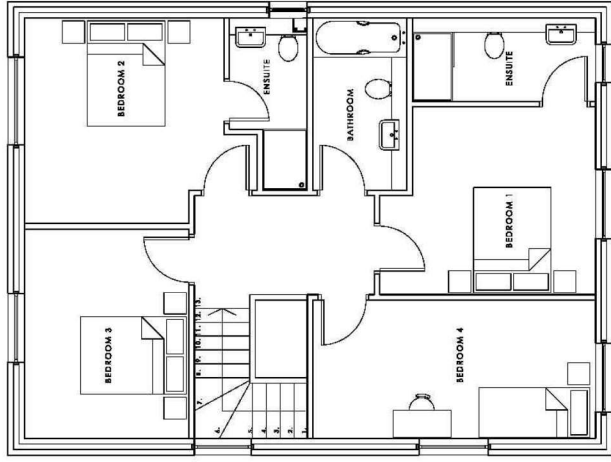
GET IN TOUCH



01673 274008



sales@skylarkhomes.com



All images, furnishings and appliance layouts are for visual purposes only. Please refer to specialist kitchen and bathroom designs for layouts. Does not include furniture and wardrobes.