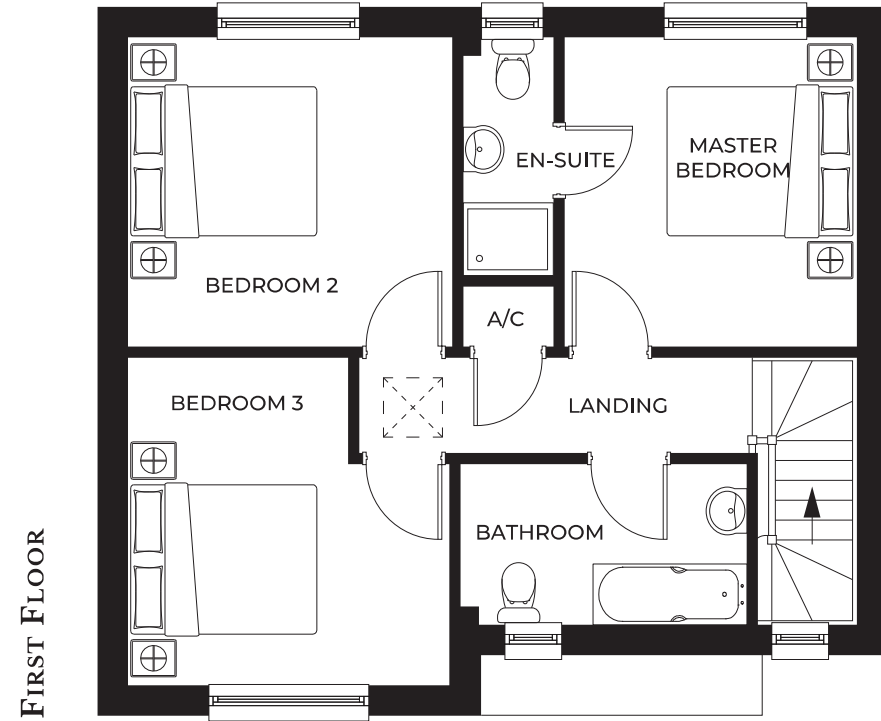
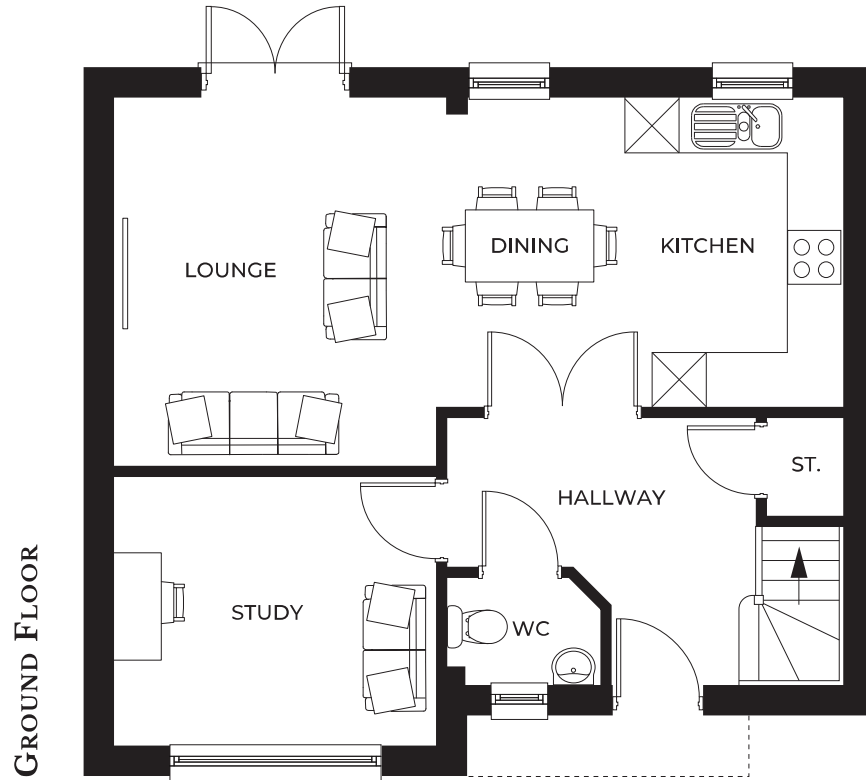


THE MERIDIAN

Bedrooms: 3 | Total floorplan area: 112m² / 1,210ft²



GROUND FLOOR

Kitchen / Dining	3.49m* x 4.41m* / 11'4" x 14'6"
Lounge	3.56m* x 4.04m* / 11'7" x 13'3"
Study	3.51m x 2.94m / 11'5" x 9'6"
WC	1.76m* x 1.3m* / 5'8" x 4'0"

FIRST FLOOR

Master bedroom	3.49m x 3.24m / 11'5" x 10'6"
En-suite	1.02m x 2.58m / 3'3" x 8'5"
Bedroom 2	3.49m x 3.52m / 11'5" x 11'6"
Bedroom 3	3.51m* x 3.50m* / 11'5" x 11'5"
Bathroom	3.17m x 1.75m / 10'4" x 5'7"