

SALE PRICE
FROM £525,000

Subject to buyer choices



THE WOODLARK



4 Bedroom Detached House

Skylark
HOMES



PLOT 21

GROUND FLOOR*

Kitchen/Dining: 6.1m x 5.8m

Lounge: 6.4m x 3.5m

Office: 4.3m x 3.5m

FIRST FLOOR*

Bedroom 1: 5.2m x 3.5m

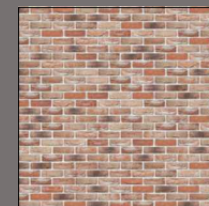
Bedroom 2: 3.8m x 3.4m

Bedroom 3: 3.5m x 3.1m

Bedroom 4: 3.5m x 3.1m

GROSS INTERNAL AREA: 191.4m²

ALL DIMENSIONS ARE APPROX.



WIENERBERGER
ATHENA

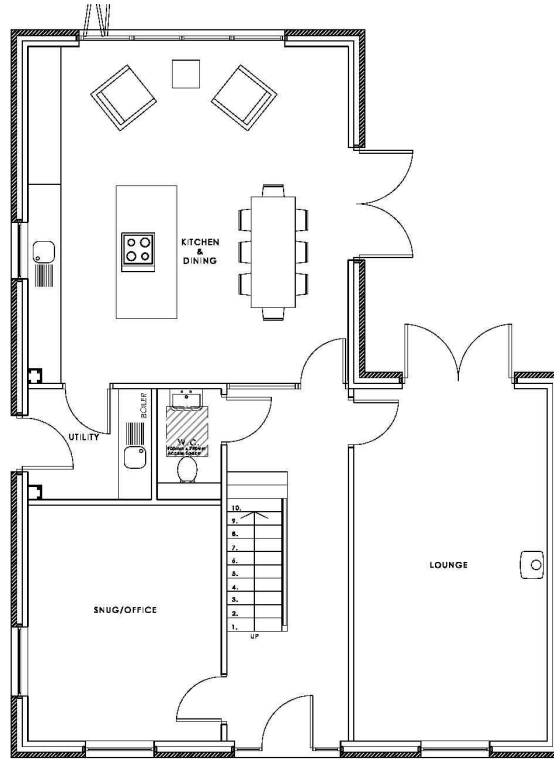


NATURAL SLATE

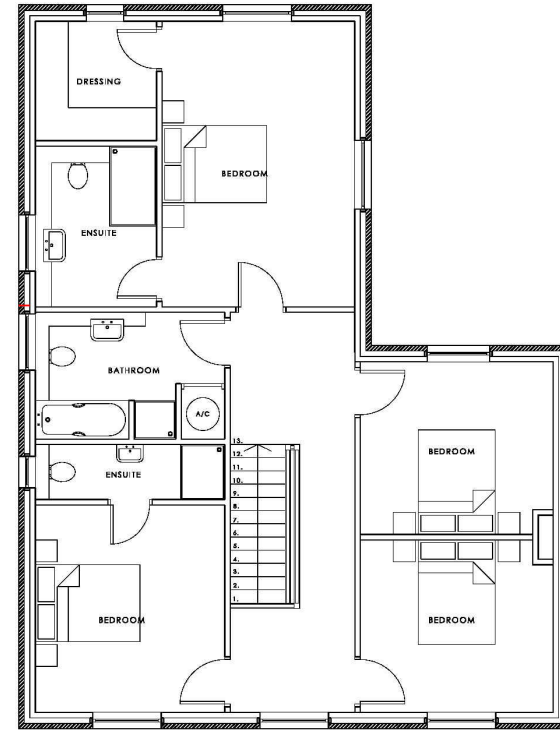
WOODLAND WALK
MARKET RASEN

KEY FEATURES FITTED AS STANDARD:

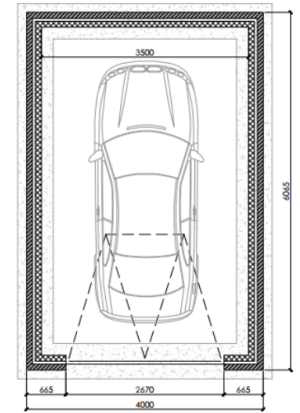
- ✓ High spec finishes
- ✓ 10 Year ICW Building Warranty
- ✓ Natural Roof coverings (Slate/Clay)
- ✓ Underfloor heating downstairs
- ✓ Smart heating controls
- ✓ Solar panels (subject to plot)
- ✓ EV Charge Points
- ✓ Large living space



GROUND FLOOR



FIRST FLOOR



SINGLE GARAGE

MORE INFORMATION

01673 274008

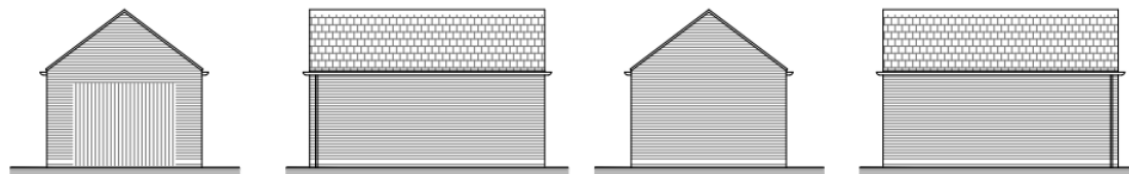
www.skylarkhomes.com

sales@skylarkhomes.com

Skylark Barn, Ashing Lane,
Dunholme, LN2 3BY



HOUSE ELEVATION



GARAGE ELEVATION

